

## Boardroom Application



Bleholmen Office Building, Stockholm

- Easy To Use
- Simple To Install
- Cost Effective
- Remote Capability
- Multi-point Control
- AV Interfacing

## Requirements

A boardroom requires an easy to use flexible lighting solution to allow the room to be used for different purposes from meetings to presentations and video conferencing.

A control point is required by each entrance to provide scene setting control. Remote control of scene setting and current level adjustment is needed from any location in the room for user convenience. Interfacing from the Audio Visual equipment is to provide integrated control.

Energy saving benefits and low cost of ownership is to be provided by absence detection and daylight harvesting, but without compromising user comfort.

The main room lighting is provided by suspended fluorescent fittings using controllable electronic ballast's. Low voltage halogen with electronic dimming transformers is used for accent and decorative effect.

## Products



### Modular Panel

Wall mounted control panel supplied in a range of combinations from two to eight buttons. All fitted with an infrared receiver.



### 303 Infrared Remote

Hand held remote control providing wireless control of the lighting system.



### 402 DALI Power Supply

Unit that provides 250mA DALI supply to all system components.



### 312 Multisensor

Ceiling mounted unit to provide occupancy detection. Also includes infrared receiver and light sensor to provide daylight harvesting functionality. (Ref: IF00002 & IF00005)



### 458 Series Single Chassis

Unit provides installation chassis for first fix electrical installation and bypass facility. It can house any 458 control module to provide 8 channels of control.

### 458/DIM8 Module

Plug in module to provide 8 channels of 5A thyristor dimming for control of low voltage halogen

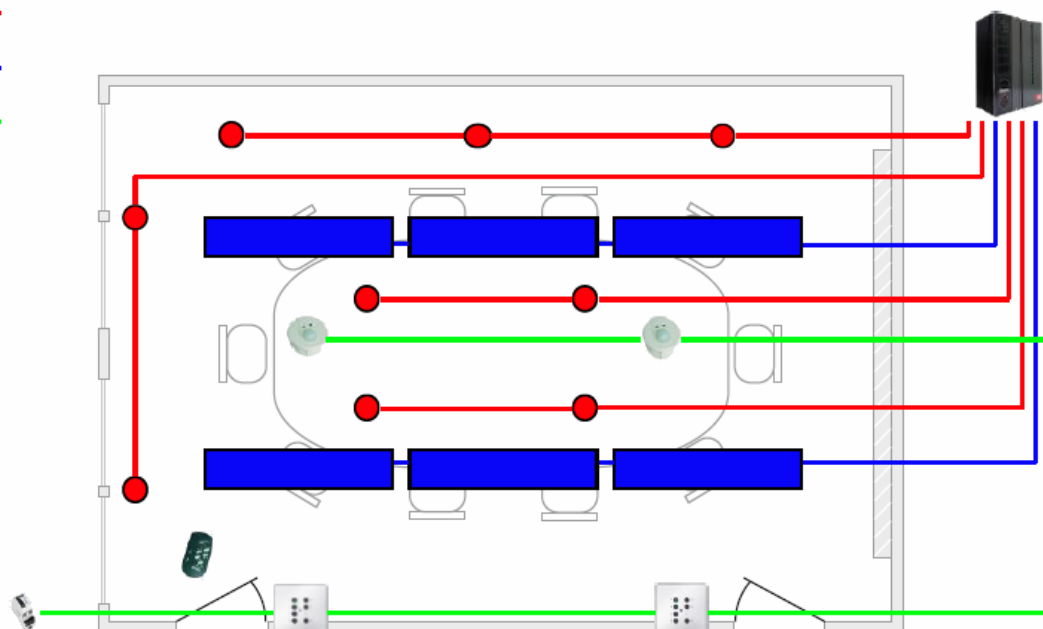
### 458 Series Option Module

Plug in DIN rail module to allow conversion of up to 4 circuits to control fluorescent lighting via 1-10V, DSI, PWM or DALI protocols.

## Wiring

— LNE Low Voltage  
— 1-10v Fluorescent  
— DALI Control Pair

From Audio Visual System



Contact your local Helvar representative or visit us online at [www.helvar.com](http://www.helvar.com)  
 Due to a policy of continuous improvement, Helvar reserve the right to alter specifications without notice at any time.