

Conference & Meeting Rooms Application



Auditorium, Helsinki

- Easy To Use
- Simple To Install
- Cost Effective
- Multi-point Control
- Partitioning
- Simple To Program

Requirements

A multiple use conference and meeting facility consisting of an auditorium, smaller seminar rooms, individual meeting rooms and a conference area.

A number of control methods are employed in the respective areas, the most typical being a local manual control point at the entrance, and a secondary control at the speakers podium if applicable. In smaller meeting rooms a sensor is also fitted to provide absence detection.

Within the conference area, the walls consist of movable partitions that allow the area to be freely expanded or sub-divided to produce a number of room configurations and sizes. The control panels must therefore be able to operate in parallel as two or more areas are joined and automatically revert to individual control as the partitions are replaced to there original positions.

Luminaires used consist of various recessed and suspended fluorescent lighting, recessed low voltage fittings and some low voltage spotlights for highlighting the speaker.

Products



Modular Panel

Wall mounted control panel supplied in a range of combinations from two to eight buttons. All fitted with an infrared receiver.



312 Multisensor

Ceiling mounted unit to provide occupancy detection. Also includes infrared receiver and light sensor to provide daylight harvesting functionality. (Ref: IF00002 & IF00005)



444 Mini Input Unit

Back box unit to allow third party interfacing to the lighting control system using voltage free contact closure. (Ref: IF00006)



920 Imagine Router

Network processor device that provides interconnection of all DALI compatible devices to form larger systems, control of S-DIM loads and DMX output. On board time clock and conditional logic functions allows automation and complex tasks to be carried out. (Ref: IF00003, IF00004, & IF00011).



458 Series Triple Chassis

Unit provides installation chassis for first fix electrical installation and bypass facility. It can house any three 458 control modules to provide 24 channels of control.

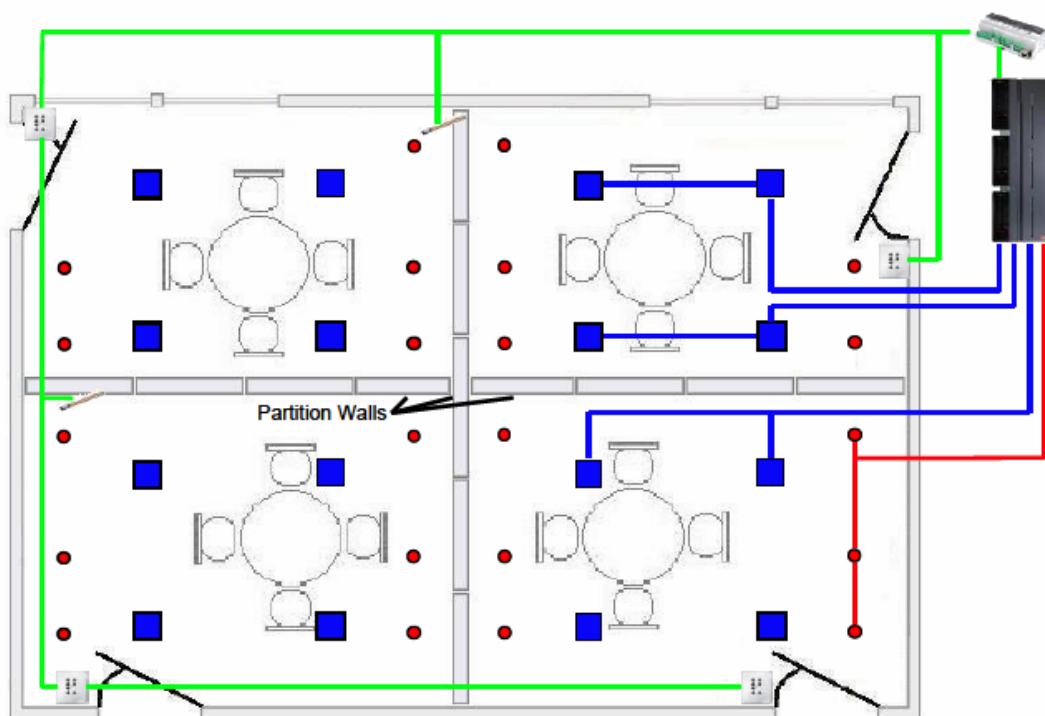
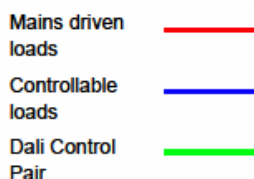
458/DIM8 Module

Plug in module to provide 8 channels of 5A thyristor dimming for control of low voltage halogen

458/CTR8 Module

Plug in module to provide 8 channels of fluorescent lighting via 1-10V, DSI, PWM or DALI protocols.

Wiring



Note:-
Not All Connections
Shown.

Contact your local Helvar representative or visit us online at www.helvar.com

Due to a policy of continuous improvement, Helvar reserve the right to alter specifications without notice at any time.