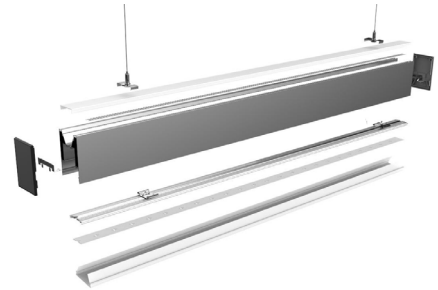
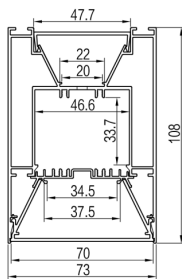
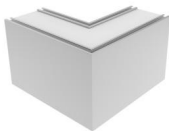
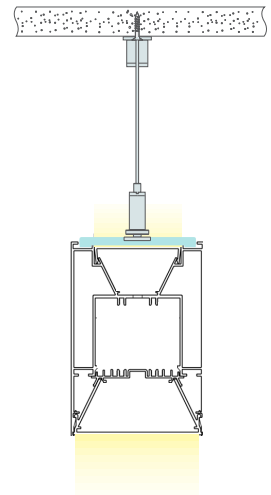


# Bline™ 70UDLG

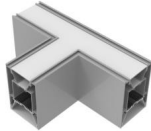
Architectural LED Aluminium Extrusion



Material	Aluminium
Finishes	Clear Anodised, Pearl White, Satin Black Custom Powdercoat Colours - Interpon
Standard Length	2,500mm
Incremental Length	100mm
Diffuser/mm	UGR19 (Unified Glare Rating)/70mm
Transmission Rate	75%
Weight	5.49Kg/2,500mm
Mounting	See Right
Connectors	See Below



90° Lit/Unlit Corner



T-Type Lit/Unlit Corner



X-Type Lit/Unlit Corner



180° Joiner/Extender

Recommended Linearflex Flexible Strip or Ledconnect PCB

Linearflex 20 - 2,500mm x 20mm - CRI >80+		Colour/Output		
Code	3000K - <b>W30</b>	4000K - <b>W40</b>	6000K - <b>W60</b>	
LFIP33-20 (Watts/Mtr)	2600 Lm/Mtr	2700 Lm/Mtr	2550 Lm/Mtr	



Ledconnect 12.5 - 499mm x 36mm - CRI >80+		Colour/Output		
Code	3000K - <b>W30</b>	4000K - <b>W40</b>	6000K - <b>W60</b>	
LCIP33-12.5 (Watts/Module)	3200 Lm/Mtr	3250 Lm/Mtr	3100 Lm/Mtr	



## PRODUCT CODE BUILDER

**Bline70UDLG - U20 - D12.5 - W30**

LED Type  
See Left

LED Colour  
See Left

Xulux Pty Ltd  
14/388 Newman Road Geebung Qld 4034  
P 07 3172 7131 F 07 3161 5598  
E sales@xulux.com.au  
W www.xulux.com.au

Specifications are subject  
to change without notice  
BLINE70UDLGRX1

**XULUX**  
LED LIGHTING SOLUTIONS