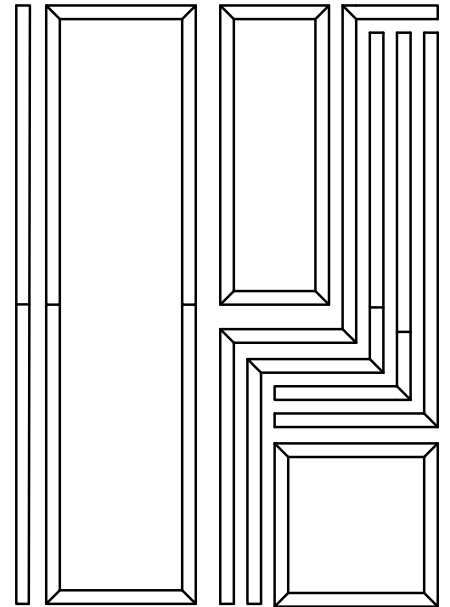
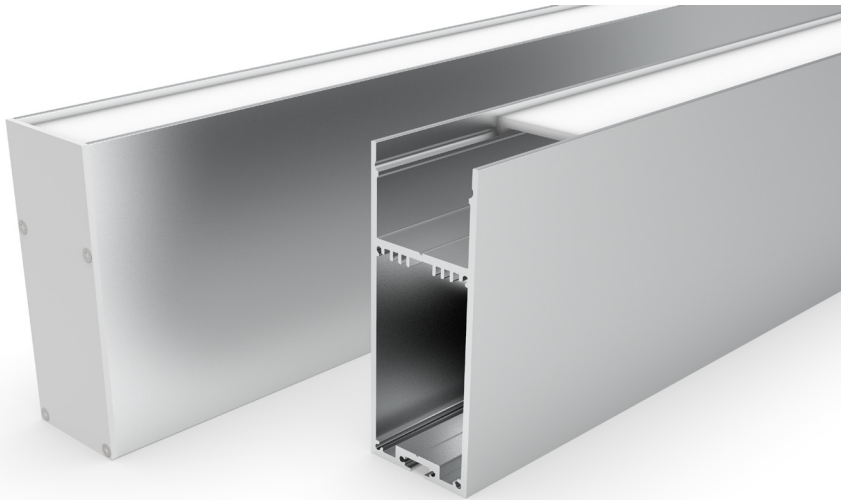
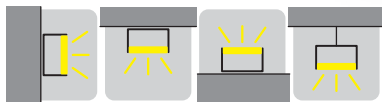


# BLINE3691

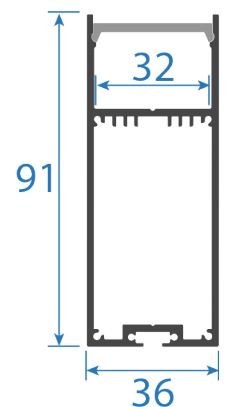
CUSTOMISABLE ARCHITECTURAL ALUMINIUM EXTRUSION



Custom Build Examples



Base Material	Aluminium
Base Finish	Naturally Anodised
Diffuser Material	PC - (Poly Carbonate)
Diffuser Transmission	70%
Dimensions	Length - 2,500mm Width - 36.0mm Height - 91.0mm Internal LED Bed - 32.0mm
End Treatment	Metal Caps
Mounting	Metal Clips/Joiners/Suspension



## Recommended LED options:

LED Option	Dimensions	CRI	Colour/Output	LEDs/Mtr	Cutting Unit
<b>Linearflex 10.1 - 5,000mm x 8mm</b>	10.20 mm	>80+	3000K - W30 4000K - W40	98	71 mm
Code					
LFP33-10.1-XXX80-24 (10.1 W/Mtr)			1147 Lm/Mtr 1183 Lm/Mtr		
<b>Linearflex 14.4 - 5,000mm x 8mm</b>	8.33 mm	>80+	3000K - W30 4000K - W40	120	50 mm
Code					
LFP33-14.4-XXX80-24 (14.4 W/Mtr)			1454 Lm/Mtr 1499 Lm/Mtr		
<b>Linearflex 17.3 - 5,000mm x 8mm</b>	5.95 mm	>80+	3000K - W30 4000K - W40	168	42 mm
Code					
LFP33-17.3-XXX80-24 (17.3 W/Mtr)			1964 Lm/Mtr 2025 Lm/Mtr		
<b>Linearflex 20 - 2,500mm x 20mm</b>		>80+	3000K - W30 4000K - W40	280	50 mm
Code					
LFP33-20-XXX80-24 (20 W/Mtr)			2600 Lm/Mtr 2700 Lm/Mtr		
<b>Ledconnect 14.5 - 495mm x 27mm</b>		>80+	3000K - W30 4000K - W40	60	100 mm
Code					
LCP33-14.5-XXX80-24 (29 W/Mtr)			2987 Lm/Mtr 3277 Lm/Mtr		
<b>Linearflex RGB - 5,000mm x 8mm</b>	16.66 mm		Red Green Blue	60	100 mm
Code					
LFP33-14.4-RGB-24 (14.4 W/Mtr)			108 L/Mtr 279 L/Mtr 55 L/Mtr		
<b>Linearflex RGBW - 5,000mm x 12mm</b>	16.66 mm		Red Green Blue	60	100 mm
Code					
LFP33-19.2-RGBW-24 (19.2W/Mtr)			108 L/Mtr 279 L/Mtr 55 L/Mtr		
<b>Linearflex ADJ - 5,000mm x 10mm</b>	14.28mm		2700k - 6000k	140	100 mm
Code					
LFP33-9.6-ADJ-24 (9.6 W/Mtr)			950 L/Mtr		

- 1 - Other Lumen Outputs, Wattages, CRI Values and IP Ratings available on request
- 2 - All dimensions were correct at time of publication but measurement tolerance may vary +/- 0.5mm
- 3 - All lumens per metre (L/Mtr) and wattage per metre (W/Mtr) test measurements are based on a 1 metre length of LED strip