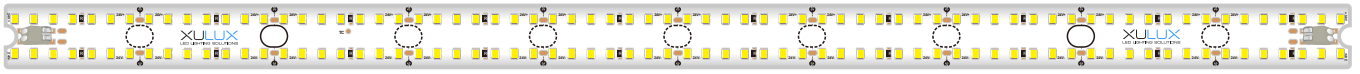
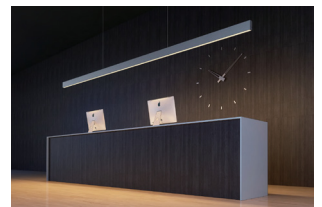
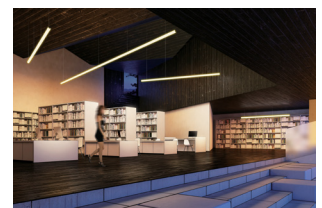


Ledconnect10.0-23

Architectural LED Linear PCB Module

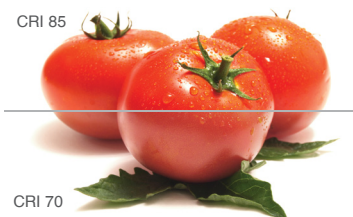
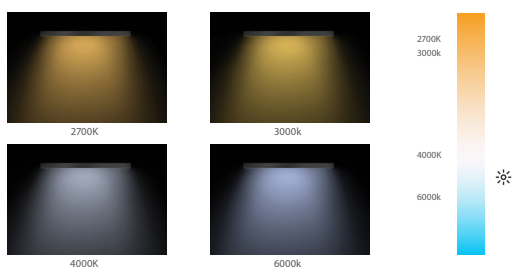
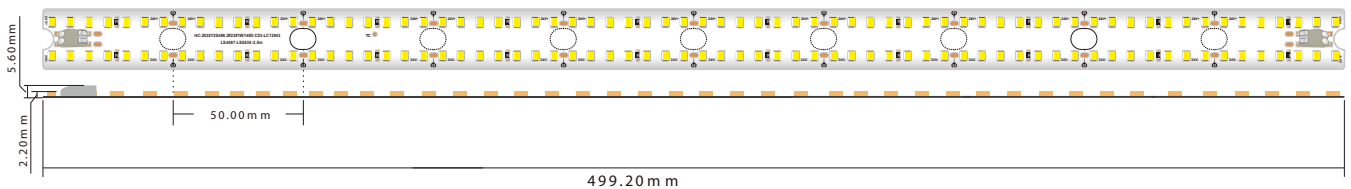


Power	10.0 watts per Module/20.0 watts per Metre
Voltage	24VDC (23v min - 25v max)
Cutting Length/Leds	50mm/14 Leds
Type of LED's	SMD2835 Constant Voltage
Number of LED's	140 per Module/280 per Metre
LED Pitch	8mm
Beam Angle	120°
Colour Temperature	2700k, 3000k, 4000k and 6000k
Ra	CRI>80 - IES FILE AVAILABLE
Bin/Step	Single bin/3 MacAdam steps
Lifetime	50,000 hours
Operating Temp	Celsius -20°C ~ +45°C
Dimensions mm (LWH)	499 x 23 x 5.6



Lumen Output

IP33		
W27	2700k	2500 Lm/Metre
W30	3000k	2600 Lm/Metre
W40	4000k	2700 Lm/Metre
W60	6000k	2540 Lm/Metre



CRI 85

CRI 70

PRODUCT CODE BUILDER

LCIP33-10.0-23-**W30**-24

LED Colour

2700K - **W27**
 3000K - **W30**
 4000K - **W40**
 6000K - **W60**

Xulux Pty Ltd
 14/388 Newman Road Geebung Qld 4034
 P 07 3172 7131 F 07 3161 5598
 E sales@xulux.com.au
 W www.xulux.com.au

Specifications are subject to change without notice
 LEDCONNECT10.0-23RX1

XULUX
 LED LIGHTING SOLUTIONS