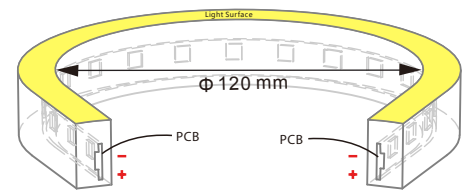
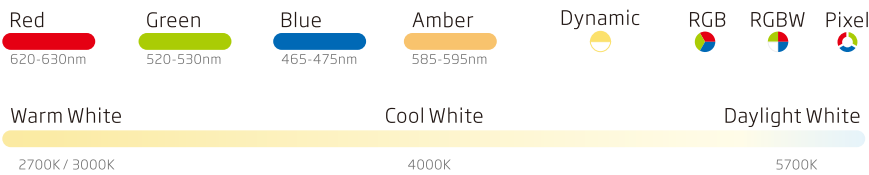
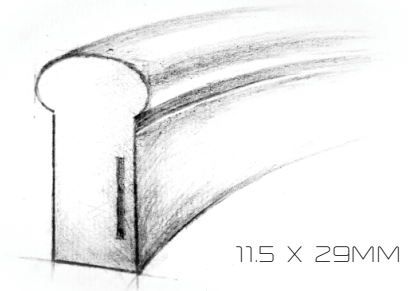
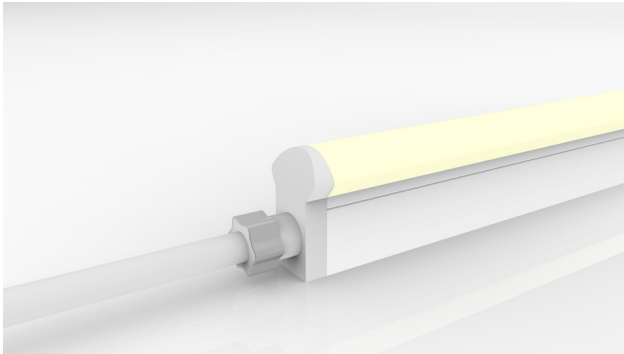


NEOLED™ TOP DOME

ARCHITECTURAL FLEXIBLE LINEAR LED NEON



- IP20-68 PROTECTION
- 120-160 BEAM ANGLE
- IK08 PROTECTION
- 120MM BEND
- SOLVENT RESISTANT
- FLAME RESISTANT
- UV RESISTANT
- SALTWATER RESISTANT
- WARRANTY**

Technical Parameters

Colour	White/Green/Blue	Red/Amber	RGB	RGBW	Dynamic
Voltage	DC24V	DC24V	DC24V	DC24V	DC24V
Power Per Metre	12 Watts	7.2 Watts	12 Watts	15 Watts	12 Watts
LED Quantity Per Metre	72	72	60	60	144
LED Pitch	13.89mm	13.89mm	16.67mm	16.67mm	13.89mm
LED Type	SMD	SMD	SMD	SMD	SMD
LED Beam Angle	160°	160°	160°	160°	160°
Minimum Bend Diameter	120mm	120mm	120mm	120mm	120mm
Minimum Cutting Led Quantity	6 Led's (1 unit)	9 Led's (1 unit)	6 Led's (1 unit)	6 Led's (1 unit)	12 Led's (1 unit)
Minimum Cutting Length	83.3mm (1 unit)	125.0mm (1 unit)	100.0mm (1 unit)	100.0mm (1 unit)	83.3mm (1 unit)
Continuous Length SGL/DBL Feed	10/20 Metres	15/30 Metres	7/10 Metres	5/10 Metres	10/20 Metres
Weight Per Metre	490g	490g	490g	490g	490g
Storage Temperature	-20 - 60°C	-20 - 60°C	-20 - 60°C	-20 - 60°C	-20 - 60°C
Working Temperature	-20 - 45°C	-20 - 45°C	-20 - 45°C	-20 - 45°C	-20 - 45°C
Dimensions - (W x H)	11.5mm x 29mm	11.5mm x 29mm	11.5mm x 29mm	11.5mm x 29mm	11.5mm x 29mm

Pixel Technical Parameters available on request

Injection Moulded Connectors - IP67

Tolerance of Connectors is +/- 0.5mm

Rear Connector
Rear Cable Feed
Available in 0.3m, 1m & 3m lengths

End Connector
End Cable Feed
Available in 0.3m, 1m & 3m lengths

Side Connector
Side Cable Feed (L or R)
Available in 0.3m, 1m & 3m lengths

End Cap

IP20 and IP68 Submersible Connectors available on request

NEOLED™ TOP DOME

ARCHITECTURAL FLEXIBLE LINEAR LED NEON

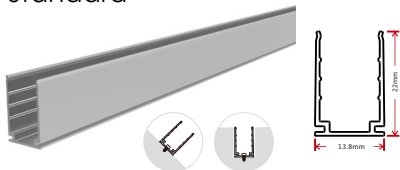
Photometric Data

Colour	CCT	Lumens per Metre
White - 2700K	2725 +/- 145K	>340lm
White - 3000K	3045 +/- 175K	>340lm
White - 4000K	3985 +/- 275K	>380lm
White - 5700K	5669 +/- 355K	>380lm
Wavelength		
Red	618-624nm	>140lm
Green	522-528nm	>280lm
Blue	468-474nm	>40lm
Amber	588-594nm	>120lm
Wavelength		
RGB - Red	618-624nm	>42lm
RGB - Green	522-528nm	>110lm
RGB - Blue	468-474nm	>181lm
R+G+B (White)		>170lm
Wavelength/CCT		
RGBW - Red	618-624nm	>42lm
RGBW - Green	522-528nm	>110lm
RGBW - Blue	468-474nm	>181lm
RGBW - 2700K	2725 +/- 145K	>110lm
RGBW - 3000K	3045 +/- 175K	>110lm
RGBW - 4000K	3985 +/- 275K	>110lm
CCT		
Dynamic - WW	2238 +/- 102K	>130lm
Dynamic - W	5669 +/- 355K	>130lm
Dynamic - W + WW	3465 +/- 245K	>260lm

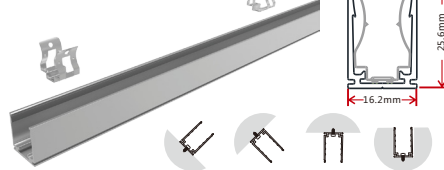
Aluminium Linear/Flexible Mounting Channel

Lengths Available - Linear - 35 & 1,000mm Flexible - 900mm

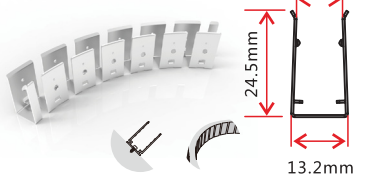
Standard



Self Locking



Flexible



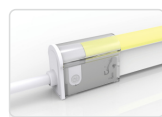
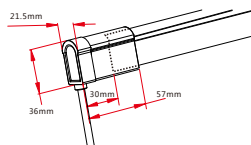
DIY Snap Connectors - IP67

Tolerance of Connectors is +/- 0.5mm



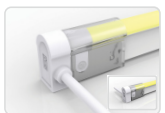
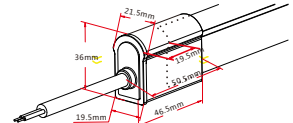
Rear Connector

Rear Cable Feed
Available in
0.3m, 1m & 3m lengths



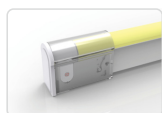
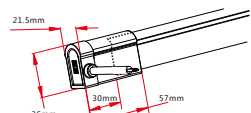
End Connector

End Cable Feed
Available in
0.3m, 1m & 3m lengths



Side Connector

Side Cable Feed (L or R)
Available in
0.3m, 1m & 3m lengths



End Cap

