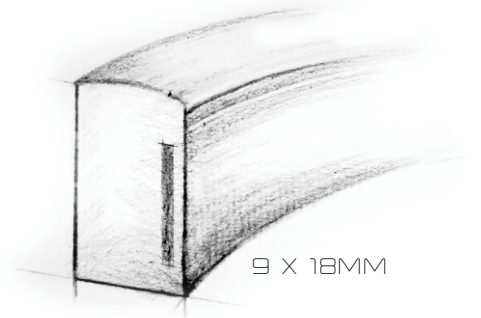
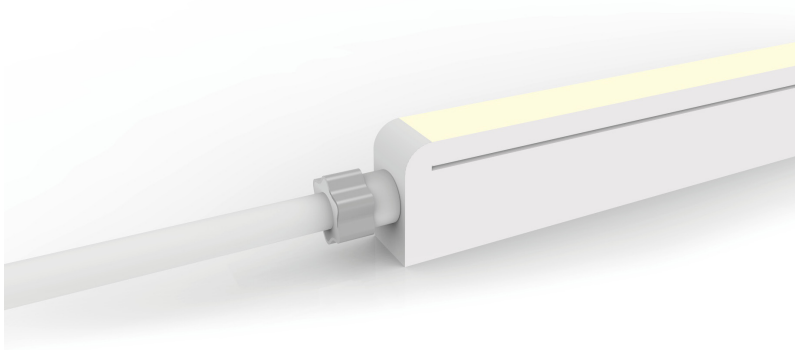


NEOLED™ TOP MINI

ARCHITECTURAL FLEXIBLE LINEAR LED NEON



- Red**

 620-630nm
- Green**

 520-530nm
- Blue**

 465-475nm
- Amber**

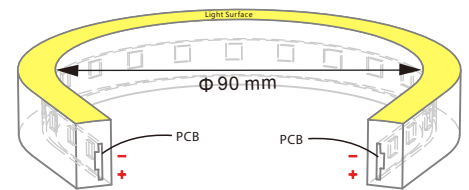
 585-595nm

- Warm White**

 2700K / 3000K
- Cool White**

 4000K
- Daylight White**

 5700K



- IP20-68 PROTECTION
- 160° BEAM ANGLE
- IK08 PROTECTION
- 90MM BEND
- SOLVENT RESISTANT
- FLAME RESISTANT
- UV RESISTANT
- SALTWATER RESISTANT
- WARRANTY**

Technical Parameters

Colour	White/Green/Blue	Red/Amber
Voltage	DC24V	DC24V
Power Per Metre	4.5 Watts	3.5 Watts
LED Quantity Per Metre	72	72
LED Pitch	13.89mm	13.89mm
LED Type	SMD	SMD
LED Beam Angle	160°	160°
Minimum Bend Diameter	90mm	90mm
Minimum Cutting Led Quantity	6 Led's (1 unit)	9 Led's (1 unit)
Minimum Cutting Length	83.3mm (1 unit)	125mm (1 unit)
Continuous Length SGL/DBL Feed	15/30 Metres	20/40 Metres
Weight Per Metre	210g	210g
Storage Temperature	-20 - 60°C	-20 - 60°C
Working Temperature	-20 - 45°C	-20 - 45°C
Dimensions - (W x H)	9mm x 18mm	9mm x 18mm

Injection Moulded Connectors - IP67

Tolerance of Connectors is +/- 0.5mm

Rear Connector
Rear Cable Feed
Available in 0.3m, 1m & 3m lengths

Side Connector
Side Cable Feed (L or R)
Available in 0.3m, 1m & 3m lengths

End Connector
End Cable Feed
Available in 0.3m, 1m & 3m lengths

End Cap

IP20 and IP68 Submersible Connectors available on request

NEOLED™ TOP MINI

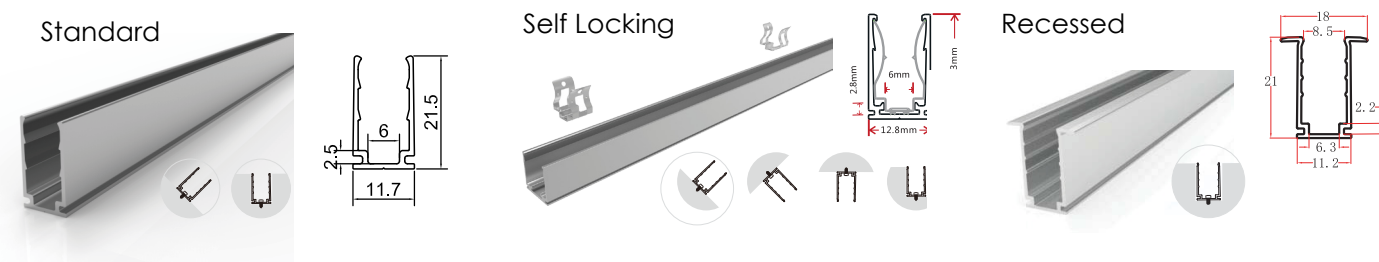
ARCHITECTURAL FLEXIBLE LINEAR LED NEON

Photometric Data

Colour	CCT	Lumens per Metre
White - 2700K	2725 +/- 145K	>110lm
White - 3000K	3045 +/- 175K	>120lm
White - 4000K	3985 +/- 275K	>120lm
White - 5700K	5669 +/- 355K	>110lm
Wavelength		
Red	620-630nm	>45lm
Green	520-530nm	>80lm
Blue	465-475nm	>15lm
Amber	585-595nm	>50lm

Aluminium Linear/Flexible Mounting Channel

Lengths Available - 35 & 1,000mm



DIY Snap Connectors - IP67

Tolerance of Connectors is +/- 0.5mm

