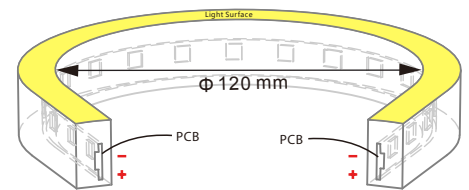
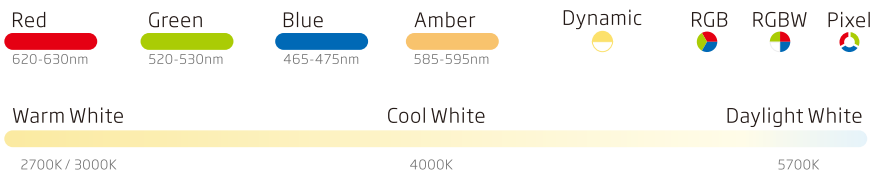
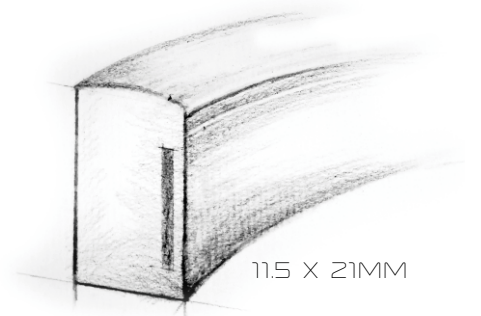
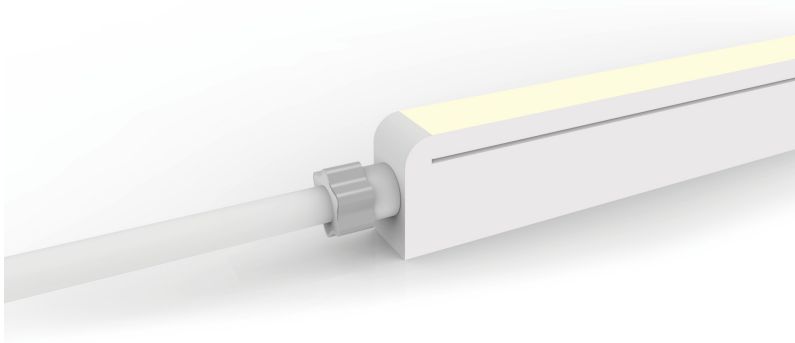


NEOLED™ TOP

ARCHITECTURAL FLEXIBLE LINEAR LED NEON



- IP20-68 PROTECTION
- 120-160 BEAM ANGLE
- IK08 PROTECTION
- 120MM BEND
- SOLVENT RESISTANT
- FLAME RESISTANT
- UV RESISTANT
- SALTWATER RESISTANT
- WARRANTY**

Technical Parameters

| Colour | White/Green/Blue | Red/Amber | RGB | RGBW | Dynamic |
|--------------------------------|------------------|------------------|------------------|------------------|-------------------|
| Voltage | DC24V | DC24V | DC24V | DC24V | DC24V |
| Power Per Metre | 12 Watts | 7.2 Watts | 12 Watts | 15 Watts | 12 Watts |
| LED Quantity Per Metre | 72 | 72 | 60 | 60 | 144 |
| LED Pitch | 13.89mm | 13.89mm | 16.67mm | 16.67mm | 13.89mm |
| LED Type | SMD | SMD | SMD | SMD | SMD |
| LED Beam Angle | 160° | 160° | 120° | 120° | 120° |
| Minimum Bend Diameter | 120mm | 120mm | 120mm | 120mm | 120mm |
| Minimum Cutting Led Quantity | 6 Led's (1 unit) | 9 Led's (1 unit) | 6 Led's (1 unit) | 6 Led's (1 unit) | 12 Led's (1 unit) |
| Minimum Cutting Length | 83.3mm (1 unit) | 125.0mm (1 unit) | 100.0mm (1 unit) | 100.0mm (1 unit) | 83.3mm (1 unit) |
| Continuous Length SGL/DBL Feed | 10/20 Metres | 15/30 Metres | 7/10 Metres | 5/10 Metres | 10/20 Metres |
| Weight Per Metre | 325g | 325g | 325g | 325g | 325g |
| Storage Temperature | -20 - 60°C | -20 - 60°C | -20 - 60°C | -20 - 60°C | -20 - 60°C |
| Working Temperature | -20 - 45°C | -20 - 45°C | -20 - 45°C | -20 - 45°C | -20 - 45°C |
| Dimensions - (W x H) | 11.5mm x 21mm | 11.5mm x 21mm | 11.5mm x 21mm | 11.5mm x 21mm | 11.5mm x 21mm |

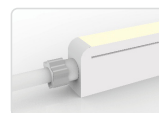
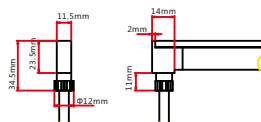
Pixel Technical Parameters available on request

Injection Moulded Connectors - IP67

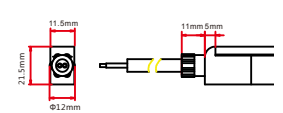
Tolerance of Connectors is +/- 0.5mm



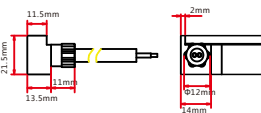
Rear Connector
Rear Cable Feed
Available in 0.3m, 1m & 3m lengths



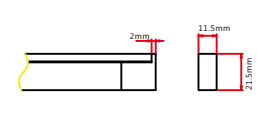
End Connector
End Cable Feed
Available in 0.3m, 1m & 3m lengths



Side Connector
Side Cable Feed (L or R)
Available in 0.3m, 1m & 3m lengths



End Cap



IP20 and IP68 Submersible Connectors available on request

NEOLED™ TOP

ARCHITECTURAL FLEXIBLE LINEAR LED NEON

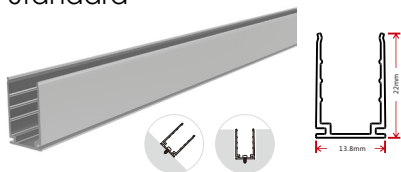
Photometric Data

| Colour | CCT | Lumens per Metre |
|-----------------------|---------------|------------------|
| White - 2700K | 2725 +/- 145K | >280lm |
| White - 3000K | 3045 +/- 175K | >280lm |
| White - 4000K | 3985 +/- 275K | >320lm |
| White - 5700K | 5669 +/- 355K | >320lm |
| Wavelength | | |
| Red | 618-624nm | >110lm |
| Green | 522-528nm | >220lm |
| Blue | 468-474nm | >35lm |
| Amber | 588-594nm | >110lm |
| Wavelength | | |
| RGB - Red | 618-624nm | >40lm |
| RGB - Green | 522-528nm | >100lm |
| RGB - Blue | 468-474nm | >151lm |
| R+G+B (White) | | >155lm |
| Wavelength/CCT | | |
| RGBW - Red | 618-624nm | >40lm |
| RGBW - Green | 522-528nm | >100lm |
| RGBW - Blue | 468-474nm | >151lm |
| RGBW - 2700K | 2725 +/- 145K | >100lm |
| RGBW - 3000K | 3045 +/- 175K | >100lm |
| RGBW - 4000K | 3985 +/- 275K | >100lm |
| CCT | | |
| Dynamic - WW | 2238 +/- 102K | >110lm |
| Dynamic - W | 5669 +/- 355K | >110lm |
| Dynamic - W + WW | 3465 +/- 245K | >220lm |

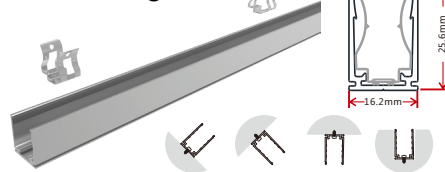
Aluminium Linear/Flexible Mounting Channel

Lengths Available - Linear - 35 & 1,000mm Flexible - 900mm

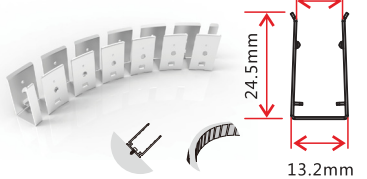
Standard



Self Locking



Flexible



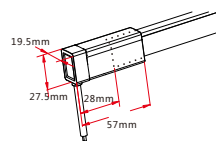
DIY Snap Connectors - IP67

Tolerance of Connectors is +/- 0.5mm



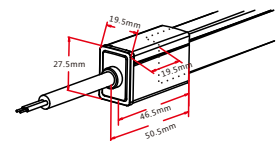
Rear Connector

Rear Cable Feed
Available in
0.3m, 1m & 3m lengths



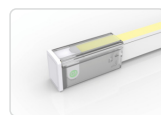
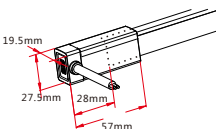
End Connector

End Cable Feed
Available in
0.3m, 1m & 3m lengths



Side Connector

Side Cable Feed (L or R)
Available in
0.3m, 1m & 3m lengths



End Cap

